



exterior render

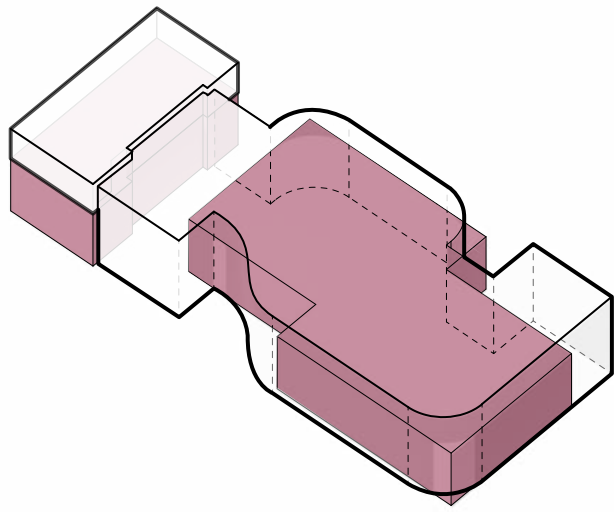
# VIVA VELLUM

Andrew De Lorenzi, Laila Kirton

**Viva Vellum** (Living Skin) softens the harsh edges of the existing Architectural Science building with a fluid form, responding to its built environment. Perforated aluminum panels wrap the building like a skin; sculptural and adaptive. This skin **DIRECTS** users to key entrances and circulation paths, **PROTECTS** through solar shading, and **INTERACTS** at a human scale with ease of removal and replacement.

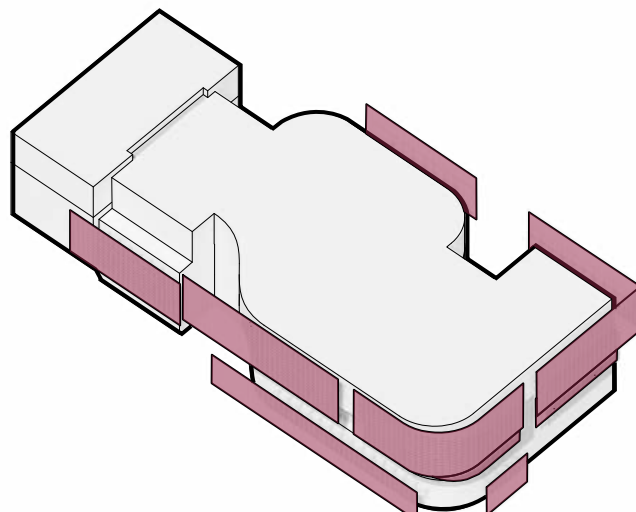
Limestone cladding anchors the structure with a solid, stereotomic presence while the tectonic aluminum panels float at varying projections, creating a striking duality between facade and form. Designed as a learning tool, the panels can be **removed and replaced by students**, who observe how different materials weather over time.

Studio spaces are reimagined as open, collaborative environments with integrated critique areas. The proposal adds much-needed space by absorbing and preserving the neighbouring Monetary Times building and adding two timber-framed stories above it, reducing carbon emissions while respecting the original structure.



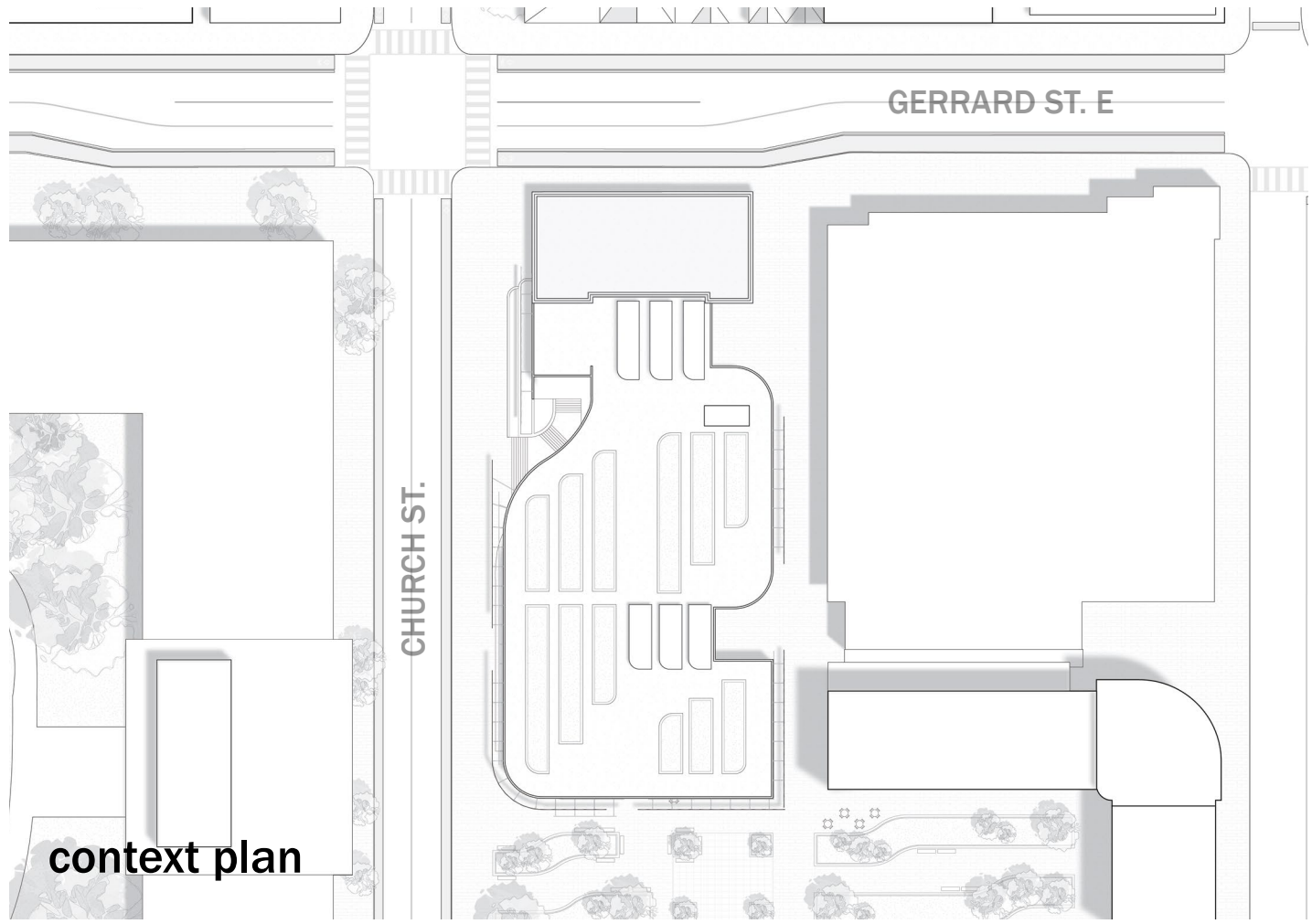
## SOFT EDGES

The proposal softens the edges of the building, creating points of interest

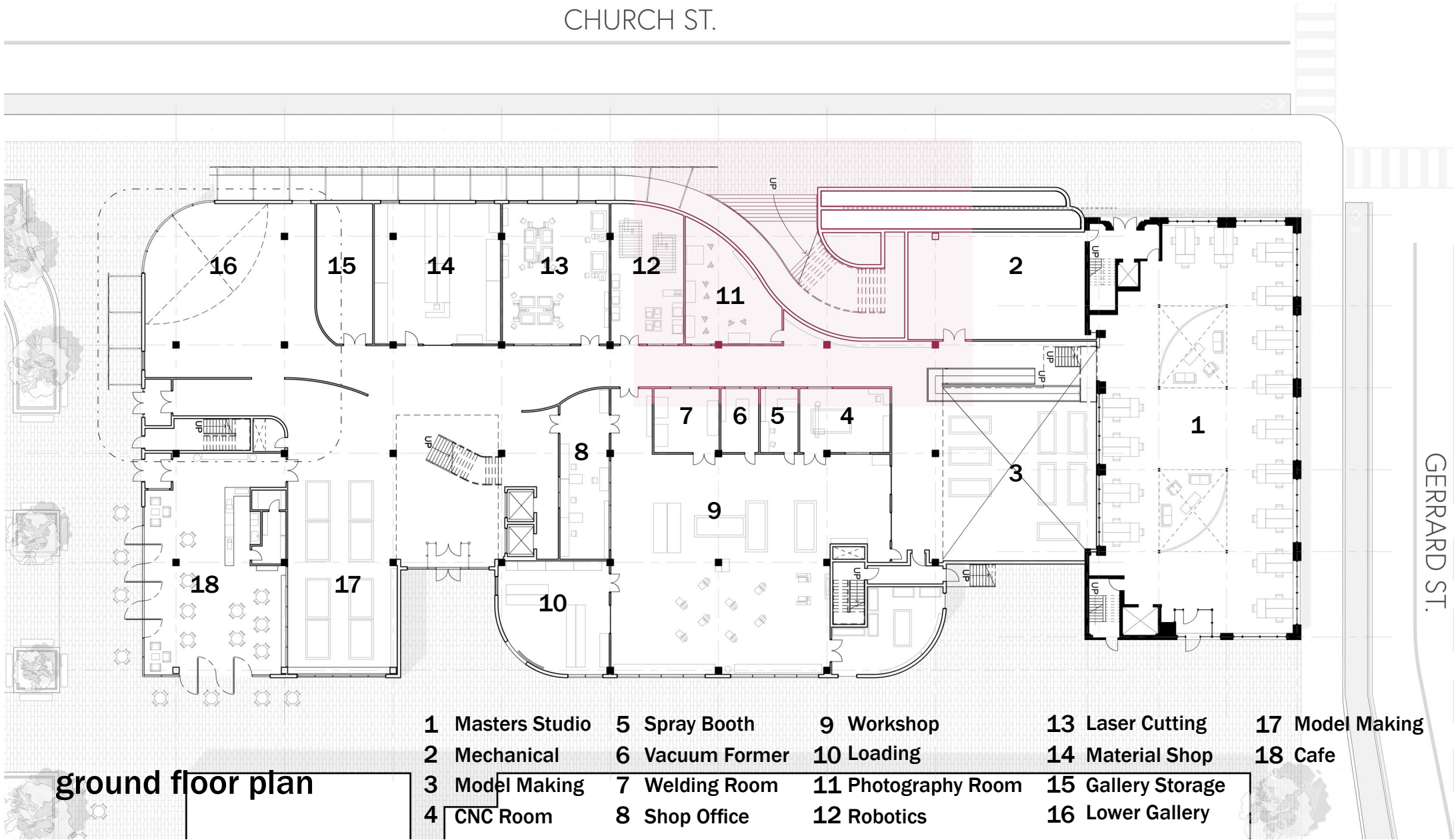


## SKIN

An interactive skin wraps the building, directing users and providing solar shading



context plan



ground floor plan

- |                  |                 |                     |                    |                 |
|------------------|-----------------|---------------------|--------------------|-----------------|
| 1 Masters Studio | 5 Spray Booth   | 9 Workshop          | 13 Laser Cutting   | 17 Model Making |
| 2 Mechanical     | 6 Vacuum Former | 10 Loading          | 14 Material Shop   | 18 Cafe         |
| 3 Model Making   | 7 Welding Room  | 11 Photography Room | 15 Gallery Storage |                 |
| 4 CNC Room       | 8 Shop Office   | 12 Robotics         | 16 Lower Gallery   |                 |

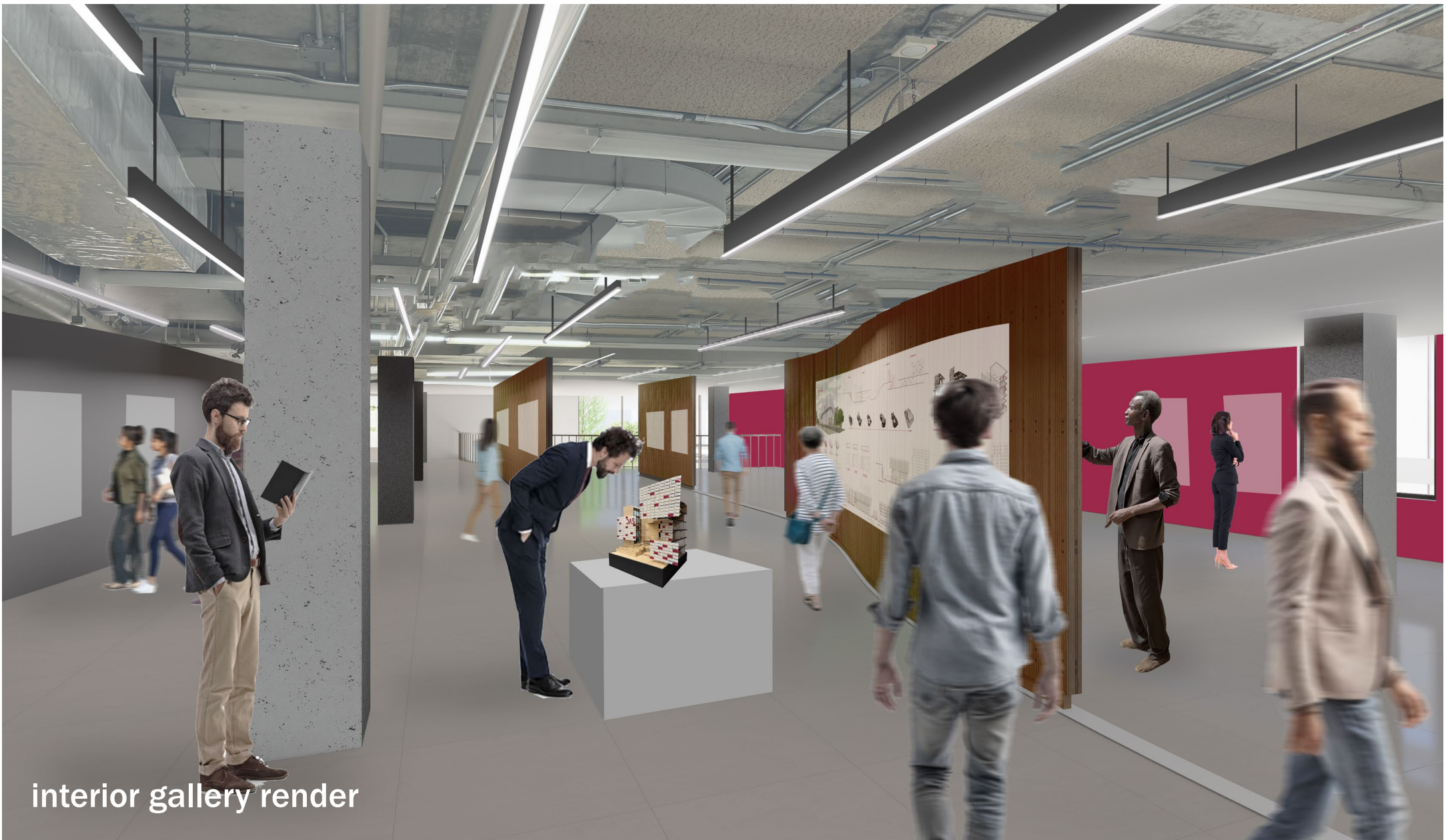


fifth floor plan

- |                      |                      |
|----------------------|----------------------|
| 1 Library            | 5 Crit Space         |
| 2 Lounge             | 6 Second Year Studio |
| 3 Fourth Year Studio | 7 Crit Space         |
| 4 Flex Space         |                      |



exterior render



interior gallery render